



**Bloxham Lodge, Great Bedwyn,**  
Marlborough, Wiltshire. SN8 3NT



## A SPLENDID GEORGIAN FORMER HUNTING LODGE SET AT THE EDGE OF THE ANCIENT SAVERNAKE FOREST IN A SECLUDED POSITION YET CLOSE TO A POPULAR VILLAGE.

### Location

Bloxham Copse is situated at the edge of the Savernake Forest, in an extremely attractive rural location, approached via a long tree lined drive, surrounded by fields and set about 1 mile from Great Bedwyn, which in turn lies some 8 miles to the east of the market town of Marlborough and about 6 miles to the west of Hungerford. Great Bedwyn is a popular thriving village having three shops, two pubs, a primary school, doctors' surgery and church. A wider range of services can be found at Swindon, Newbury, Andover and Salisbury

There is a well thought of primary school in the village with secondary schools at St John's Marlborough and Hungerford. Other schools in the area include Marlborough College, St Francis prep school, St Margarets and St Marys Calne and Dauntseys.

There are regular buses from Great Bedwyn

and the train station gives services to London Paddington with a journey time of 1hour 13 mins. Junction 14 of the M4 lies 10 miles to the north of Hungerford whilst the A338 gives fast access to the A303/M3.

### Description

Bloxham Lodge believed to date from 1730 is Grade II listed. The property comprises a Georgian house with a wing on either side and is of brick elevations under a pitched tiled roof with sash windows. The accommodation comprises classically proportioned rooms with high ceilings, open fireplaces with stone mantelpieces and ornate coving to some of the rooms.

The **Entrance Hall** with tiled floor, has to one side a **Cloakroom** with basin and wc and leads to an inner hall and door to the garden. To one side is a **Sitting Room** with an open fireplace, seagrass carpeting and built in cupboards and

via a lobby a formal **Drawing Room** with open fireplace, with built in shelves to either side and seagrass carpeting. To the other side of the stairs is a **Dining Room** with exposed floor boards and open fireplace. **Utility Room** with plumbing for washing machine and space for drier. A corridor leads to the **Kitchen**, which has a tiled floor and beamed ceiling with a range of wall and floor units including a double sink, double oven, dishwasher and a pantry. A rear Lobby leads to the ground floor **Bedroom 5** with seagrass flooring and a cast iron log burner. Stairs lead from the lobby to **Bedroom 4** with a large **ensuite Dressing/Bathroom**.

The main stairs lead to a **Family Bathroom** with bath and shower attachment, hand basin, and wc, and **Bedroom 3**. There are **two main Bedrooms** both with open fireplaces high ceilings and seagrass carpeting and stunning views over the garden.

### Outside

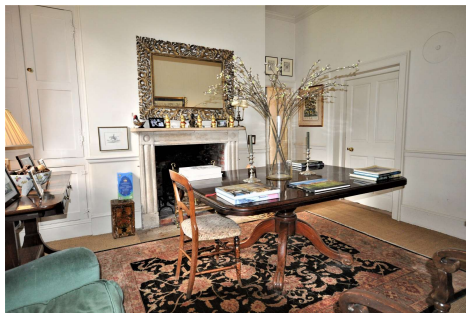
The house lying at the edge of the Forest is surrounded by fields and is approached via a long drive leading to a gravelled parking area and on round to a large Garage. The gardens are a major feature to the house lying mostly to the south west and bordered by a high brick wall. This amazing lawned garden boasts numerous mature plantings with walkways and "rooms" created from the use of yew hedging. There are ornate weeping pears, box hedging, a lavender lined flagstoned terrace lying off the house and many rose beds and mature wisteria and vines.

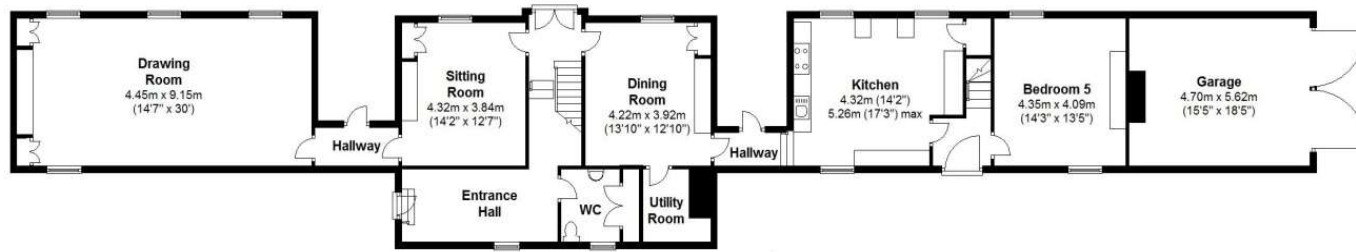
### Services

Mains electricity, private drainage and water, oil fired central heating

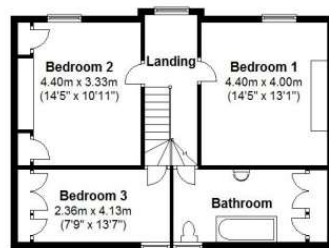
### Directions

From Marlborough take the A4 east towards Hungerford. Turn off right to Great Bedwyn

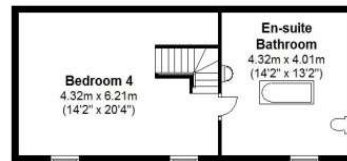




**Ground Floor**  
Approx. 179.5 sq. metres (1932.1 sq. feet)



**First Floor**  
Approx. 108.3 sq. metres (1166.1 sq. feet)



Total area: approx. 287.8 sq. metres (3098.2 sq. feet)







#### Important Notice

Our property particulars do not represent an offer or contract, or part of one. The information given is without responsibility on the part of the agents, seller(s) or lessor(s) and you should not rely on the information as being factually accurate about the property, its condition or its value. Neither Birkmyre Property Consultants nor anyone in its employment or acting on its behalf has authority to make any representation or warranty in relation to this property. We have not carried out a detailed survey, nor tested the services, appliances or fittings at the property. The images shown may only represent part of the property and are as they appeared at the time of being photographed. The areas, measurements and distances are approximate only. Any reference to alterations or use does not mean that any necessary planning permission, building regulation or other consent has been obtained. The VAT position relating to the property may change without notice.



www.birkmyre.co.uk  
01672 516619

23 The Parade, Marlborough, Wiltshire. SN8 1NE

**birkmyre**  
property consultants